



Ezy-Fit

Tile Access Panel Kit

FOR A FAST, FLEXIBLE AND PROFESSIONAL FINISH EVERY TIME

Maintaining access to building services hidden behind porcelain or ceramic tiles is a common requirement in residential and commercial projects.

BUT most tiling contractors agree that installing tile access panels can be tricky.



Trying to line up hinges and brackets to get a perfect finish is **fiddly, frustrating** and can **lose precious time** on a job.

Plus there are often **return trips** to site afterwards to open the panel for access.

That's why we've worked with a leading commercial tiling contractor to design Ezy-Fit, a professional solution that's been tested by trade experts.

SAVE TIME AND COSTS ON YOUR NEXT PROJECT



FLEXIBLE

- Tile position can be easily adjusted for perfect alignment
- Anyone can install, special trades not needed



FAST

- Install time less than half vs traditional methods
- No precision hinges or drilling required



PERFECT FINISH

- Easy to adjust for level finish
- Grout for complete invisibility, or edge-seal with clear silicone
- Dual Grip technology for super secure hold



EASY ACCESS

- Simple suction-cup method
- Clean and non-destructive
- No need for return visit by tiler or for spare tiles



Ezy-Fit Tile Access Panel Kit



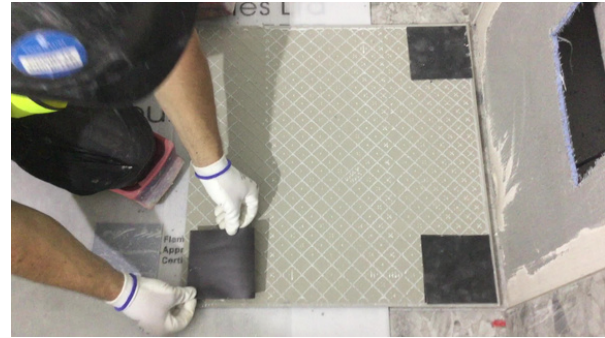
Access panel kits are generally unsightly, costly and time consuming to install. Finally Ezy-Fit offers a solution that works for tilers.
- Ashbury Tiles Ltd

HOW IT WORKS

Available for SVP and Bath Panels, Ezy-Fit Tile Access Panel Kits contain two components:

IOBAC Magnetic Access Tabs

- Clever little squares are magnetic on one side and self-adhesive on the other
- Peel and stick adhesive side to the back of the porcelain/ceramic tile
- Magnetic side is attracted to the Compressive Packers
- Allows tile to be easily manoeuvred into position



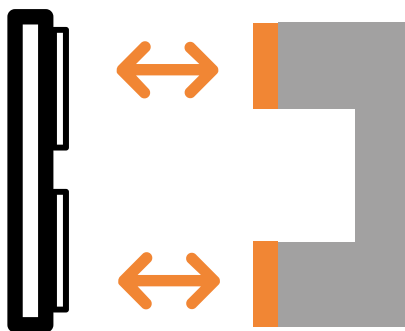
IOBAC Compressive Crumb Rubber Packers

- Flexible and conformable pads help to level tiles
- Magnetically receptive (metallic) to enable magnetic hold to porcelain/ceramic tiles
- Patented Dual-Grip technology combines adhesive tack for flexible tile positioning, and magnetism for superior hold
- Made of rubber crumb recycled from tyres - re-usable and recyclable
- Secured to wall with adhesive

HARD TO SHIFT, EASY TO LIFT

Unique Dual-Grip bond means porcelain and ceramic tiles are held securely in place using both adhesion and magnetic attraction

Yet when access is needed, the tile is simply lifted away using a suction cup. No mess, no broken tiles, no bother.



Porcelain/Ceramic tile with Magnetic Access Tabs

Access panel with Packers

Dual-Grip bond
Adhesion + Magnetic attraction



[Click for video demonstration](#)